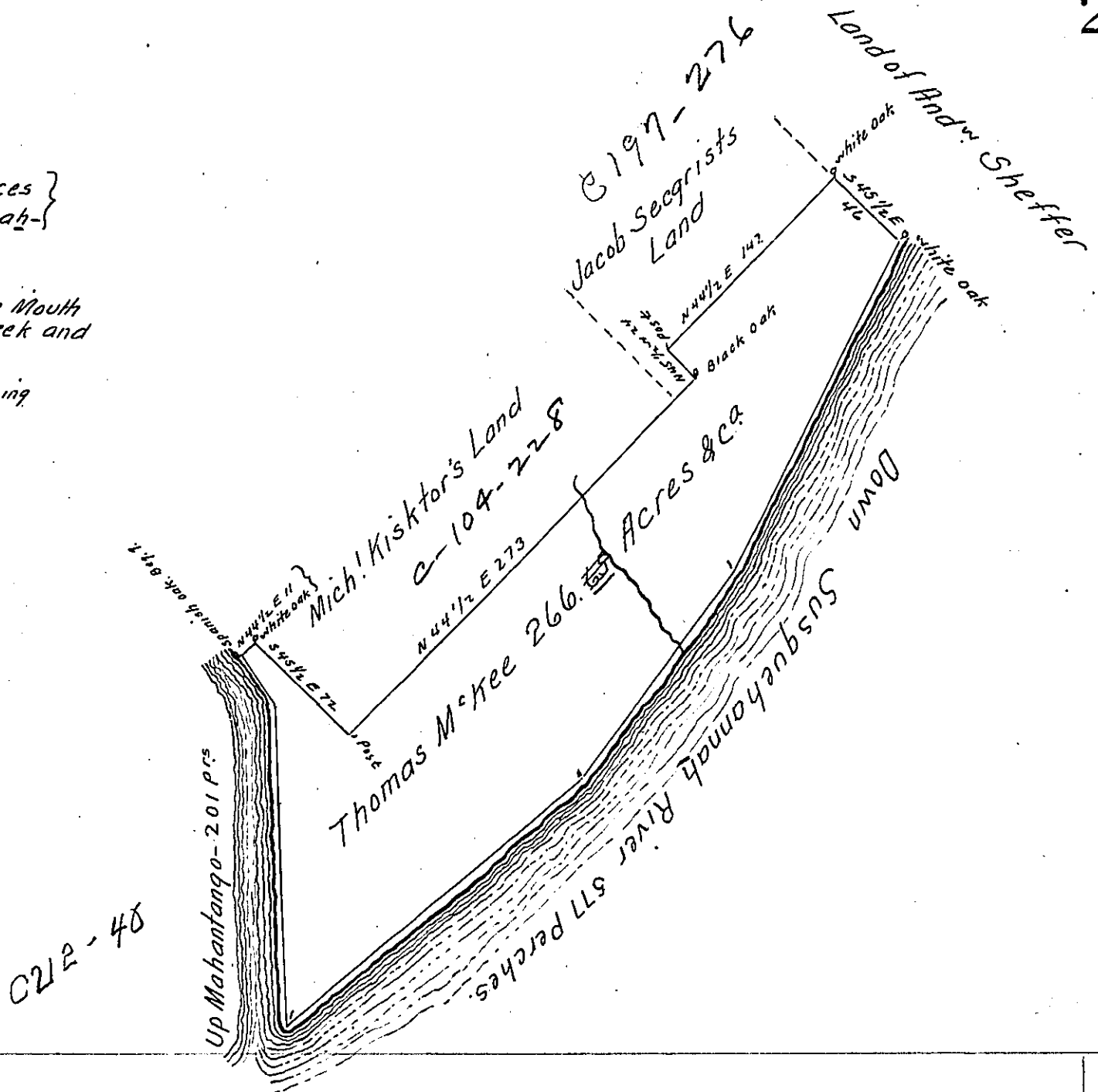


Courses and Distances }
 Down Susquehanna- }
 S. 28 W 215
 S. 38 W 140
 S. 51 W 222
 577- to the Mouth
 of Mahantango Creek and
 up Same
 N 1 E 169
 N. 23 W 32 to Beg. ing
 201-



The Draught of a Tract of Land Called - situate on the West side of Susquehanna - above and adjoining the Mouth of Mahantango Creek in the County of Cumberland, containing Two Hundred Sixty Six acres ~~58 Perches~~ with the usual Allowance of Six Acres p Cent for Roads, resurvey'd the 21st day of May Anno. Dom. 1768, agreeable to the Lines of the Original Survey made in Pursuance of a Warrant from the Honble Proprietaries to Thomas McKee Bearing Date at Philad^a the 5th day of March Anno. Dom. 1755.

To John Lukens Esq. S.G. } p W^m Macloy D.S.
 of Pennsylvania }
 (now) North^d County.

IN TESTIMONY that the above is a copy of the original remaining on file in the Department of Internal Affairs of Pennsylvania, made conformably to an Act of Assembly approved the 16th day of February, 1833, I have hereunto set my Hand and caused the Seal of said Department to be affixed at Harrisburg, this twenty seventh day of November 1905,

Loac B. Brown
 Secretary of Internal Affairs.